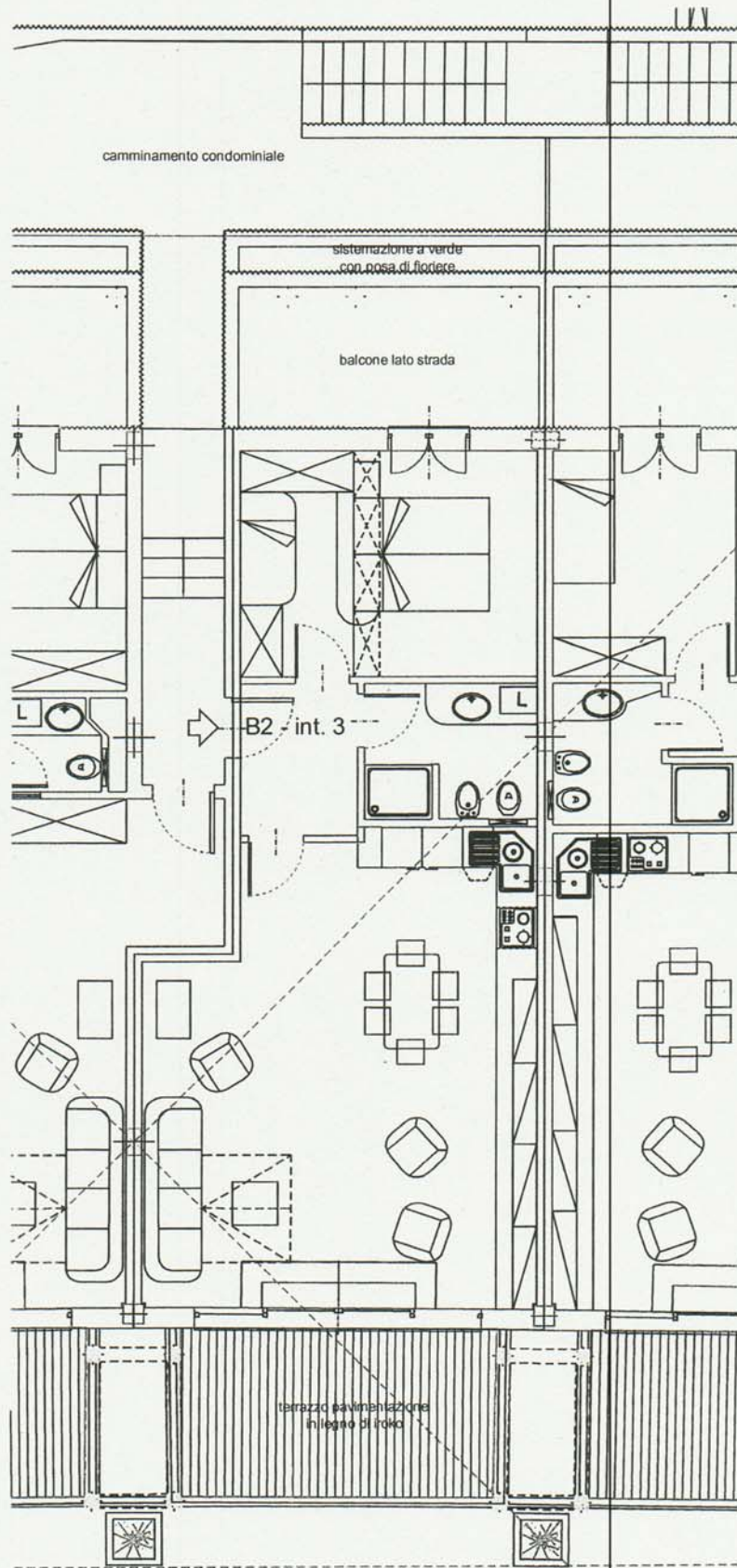


APPARTAMENTO EDIFICIO PRINCIPALE DI SPINA  
 CORPO B2 - int. 3 -  
 BLOCK B2 - int. 3 -



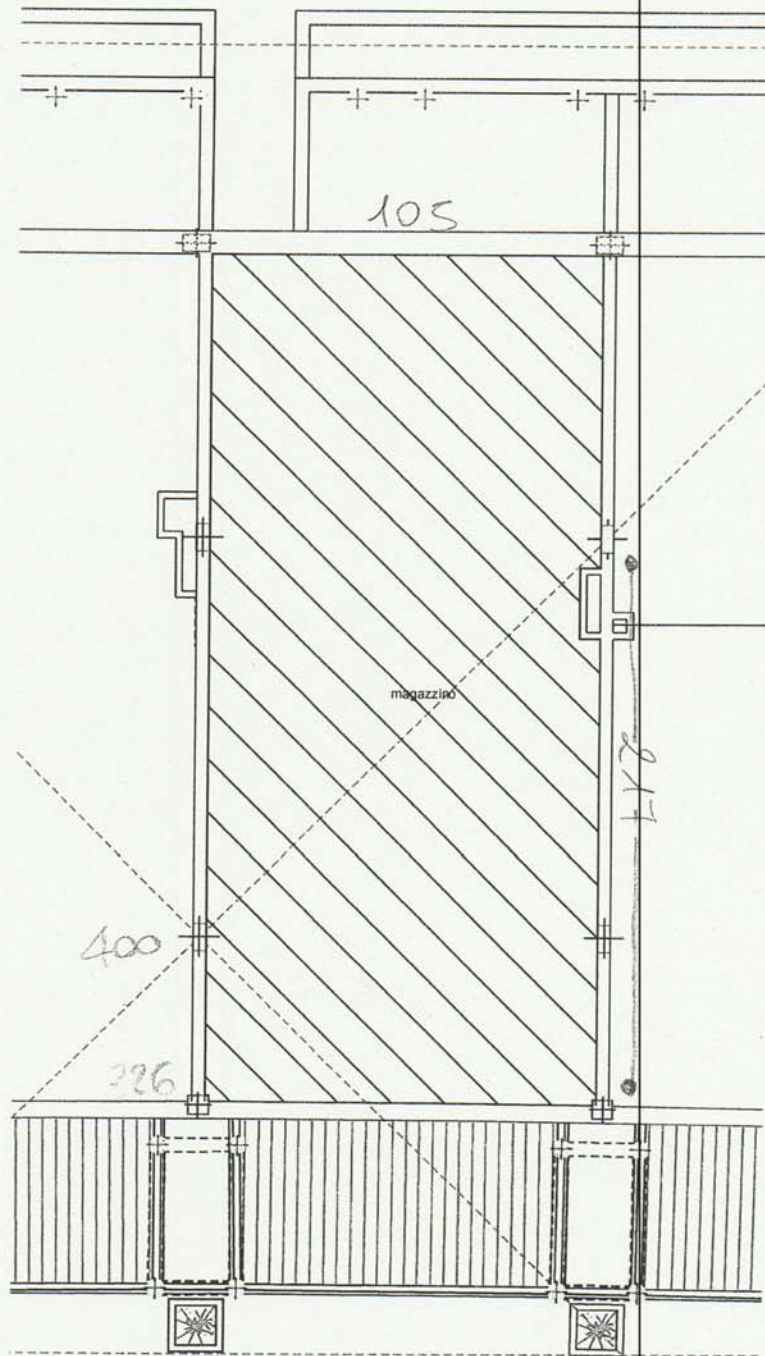
CORPO B2 - piano primo - int. 3 - scala 1:100 -

n. appartamento	sup. commerciale - mq -	terrazzo - mq -
int. 3	69.73	26.74

BLOCK B2 - first floor - int. 3 - scala 1:100 -

apartment #	inside surface - mq -	outside surface - mq -
int. 3	69.73	26.74

APPARTAMENTO EDIFICIO PRINCIPALE DI SPINA  
 CORPO B2 - int. 3 -  
 BLOCK B2 - int. 3 -



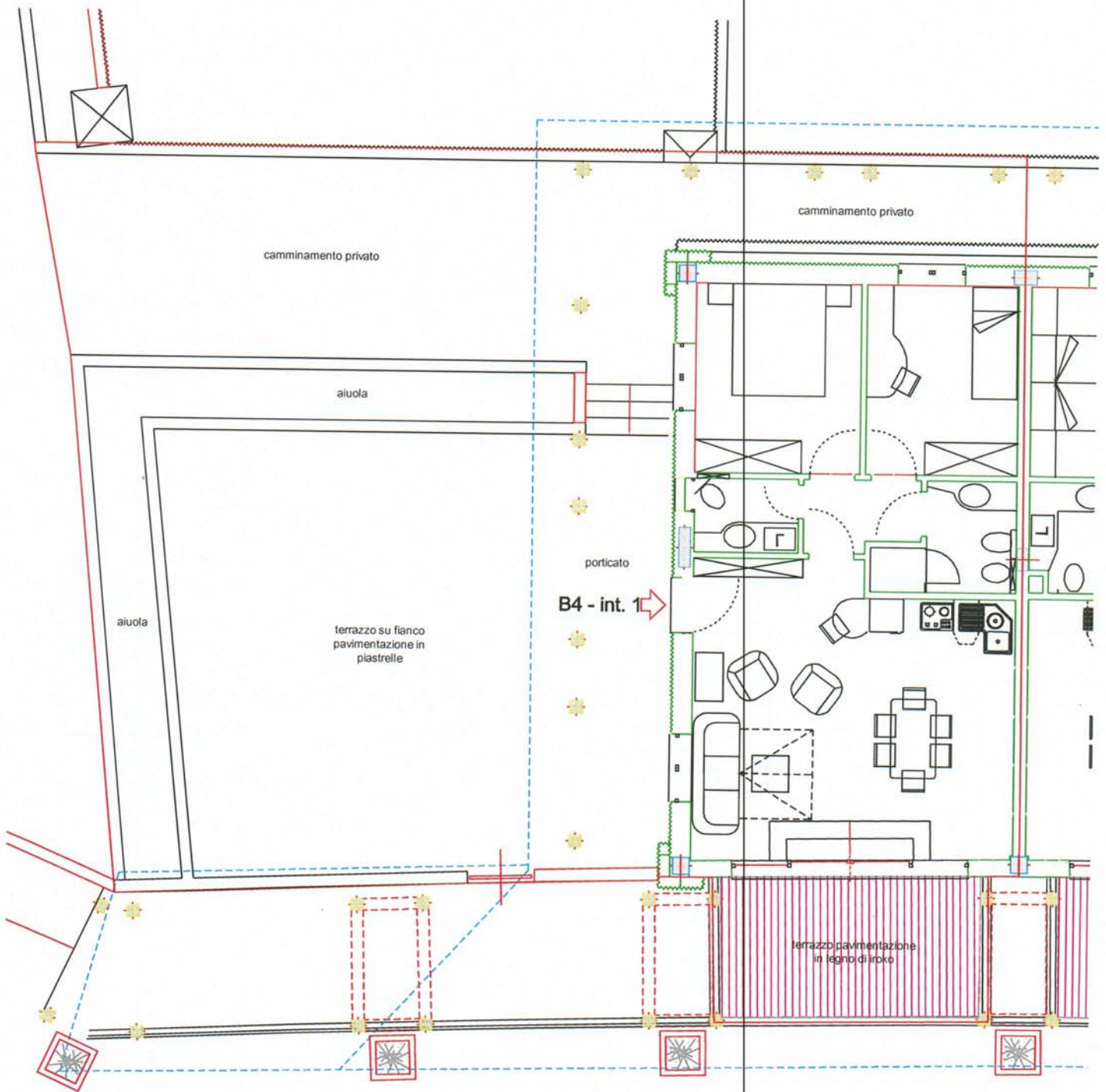
CORPO B2 - piano secondo - int. 3 - scala 1:100 -

BLOCK B2 - second floor - int. 3 - scale 1:100 -

n. appartamento	sup. magazzino - mq -
int. 3	74.38

apartment #	mezzanine level - mq -
int. 3	74.38

APPARTAMENTO EDIFICIO PRINCIPALE DI SPINA  
 CORPO B4 - int. 1 -  
 BLOCK B4 - int. 1 -



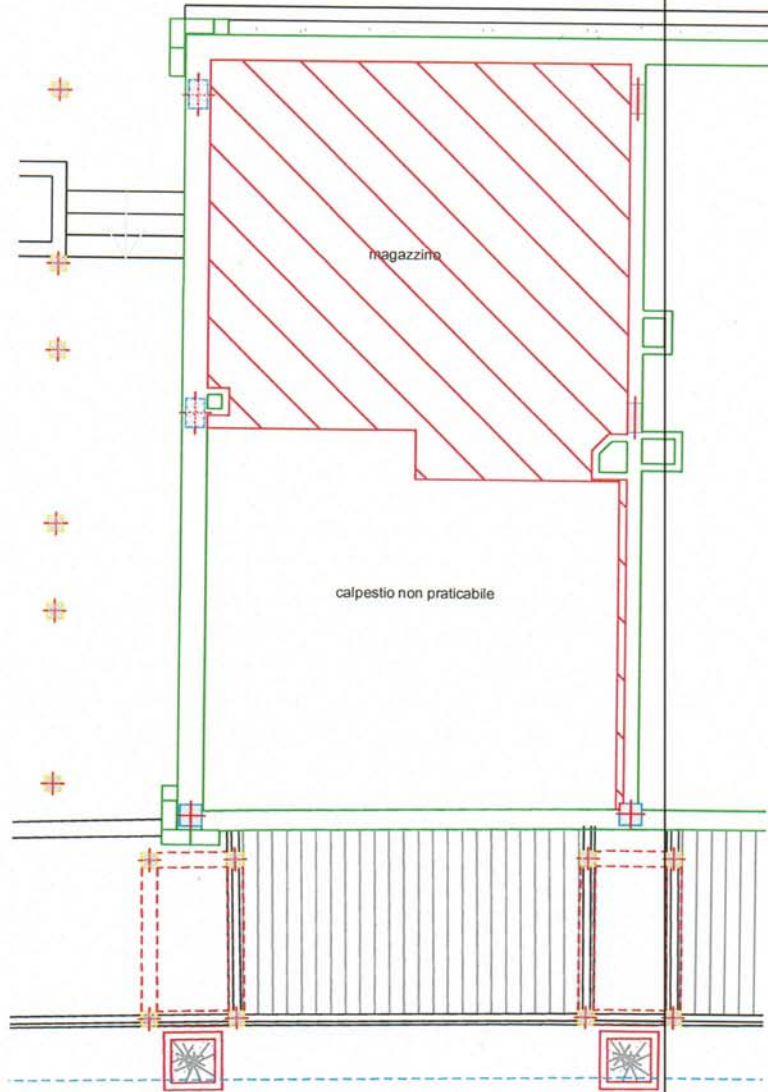
CORPO B4 - piano primo - int. 1 - scala 1:100 -

n. appartamento	sup. commerciale - mq -	terrazzo - mq -
int. 1	68.34	164.92

BLOCK B4 - first floor - int. 1 - scale 1:100 -

apartment #	inside surface - mq -	outside surface - mq -
int. 1	68.34	164.92

APPARTAMENTO EDIFICIO PRINCIPALE DI SPINA  
 CORPO B4 - int. 1 -  
 BLOCK B4 - int. 1 -



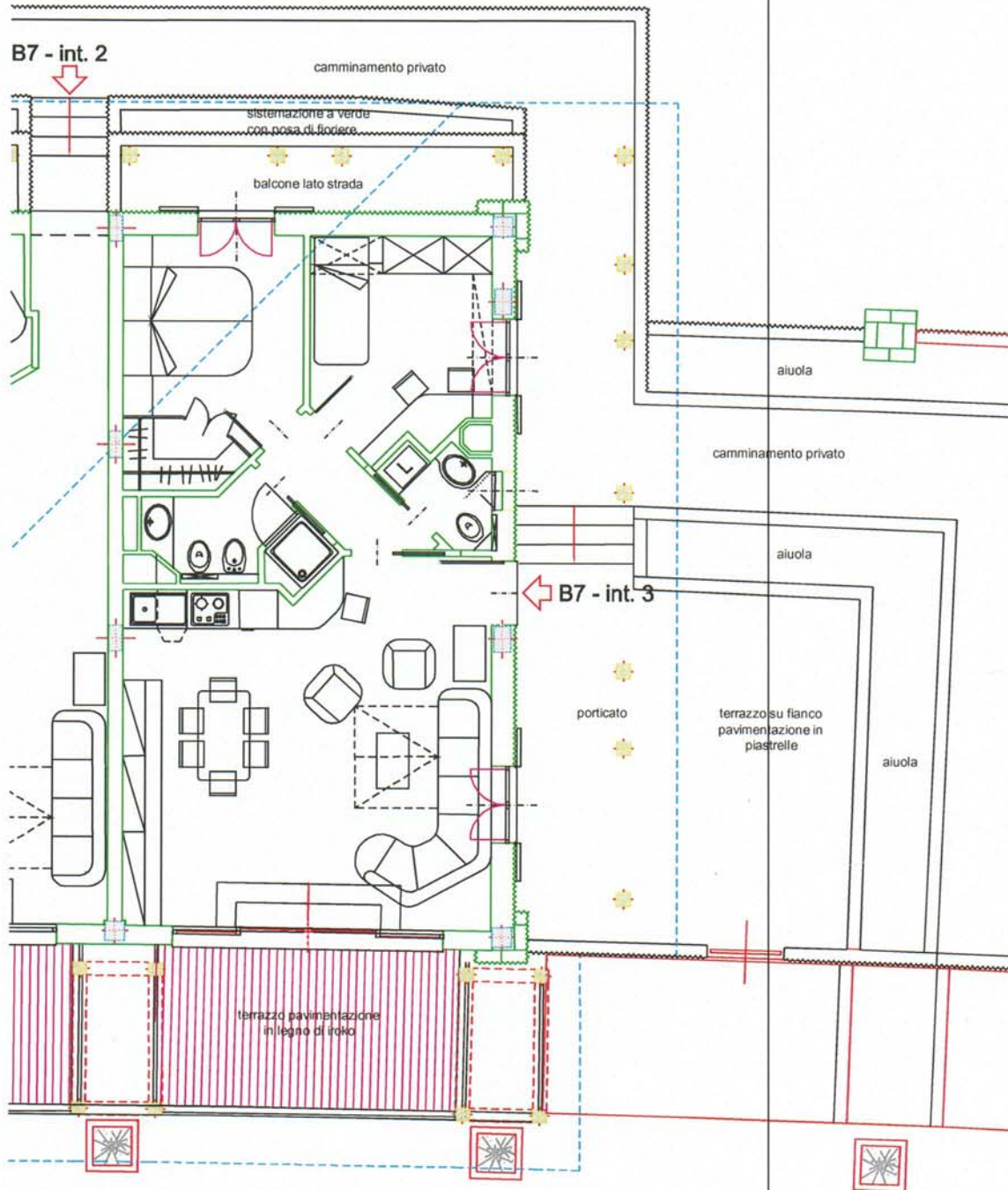
CORPO B4 - piano secondo - int. 1 - scala 1:100 -

n. appartamento	sup. magazzino -mq-
int. 1	31.38

BLOCK B4 - second floor - int. 1 - scale 1:100 -

apartment #	mezzanine level -mq-
int. 1	31.38

APPARTAMENTO EDIFICIO PRINCIPALE DI SPINA  
 CORPO B7 - int. 3 -  
 BLOCK B7 - int. 3 -



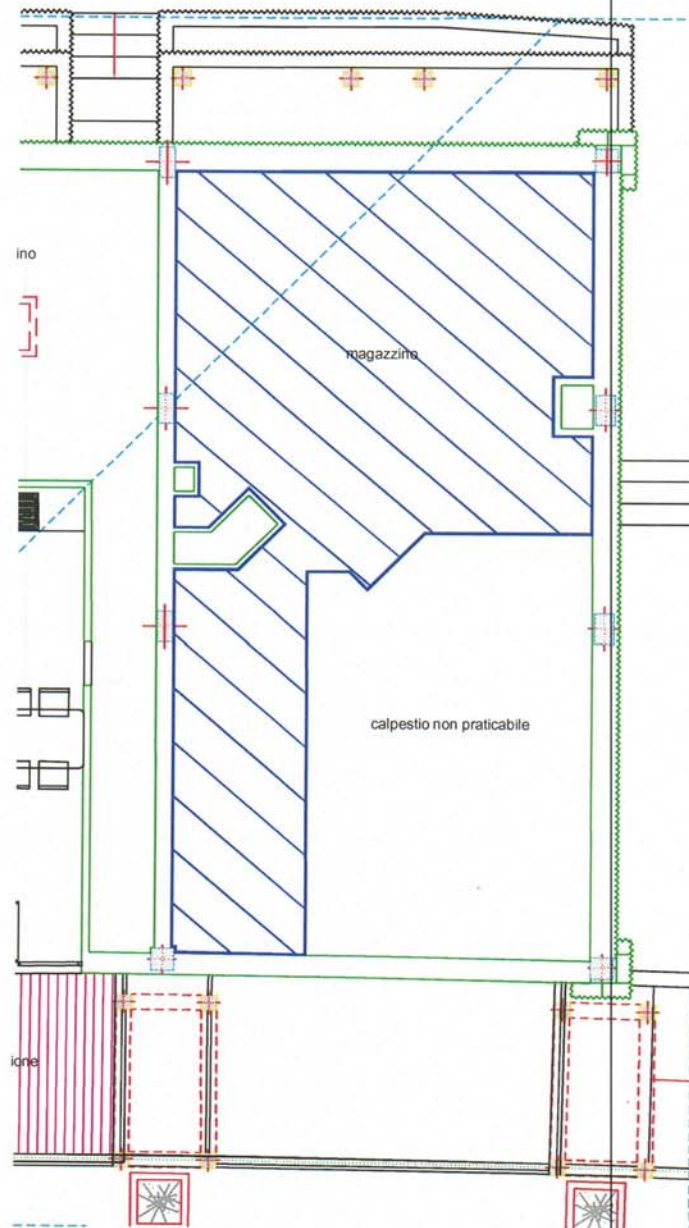
CORPO B7 - piano primo - int. 3 - scala 1:100 -

BLOCK B7 - first floor - int. 3 - scale 1:100 -

n. appartamento	sup. commerciale - mq -	terrazzo - mq -
int. 3	70.76	110.79

apartment #	inside surface - mq -	outside surface - mq -
int. 3	70.76	110.79

APPARTAMENTO EDIFICIO PRINCIPALE DI SPINA  
 CORPO B7 - int. 3 -  
 BLOCK B7 - int. 3 -



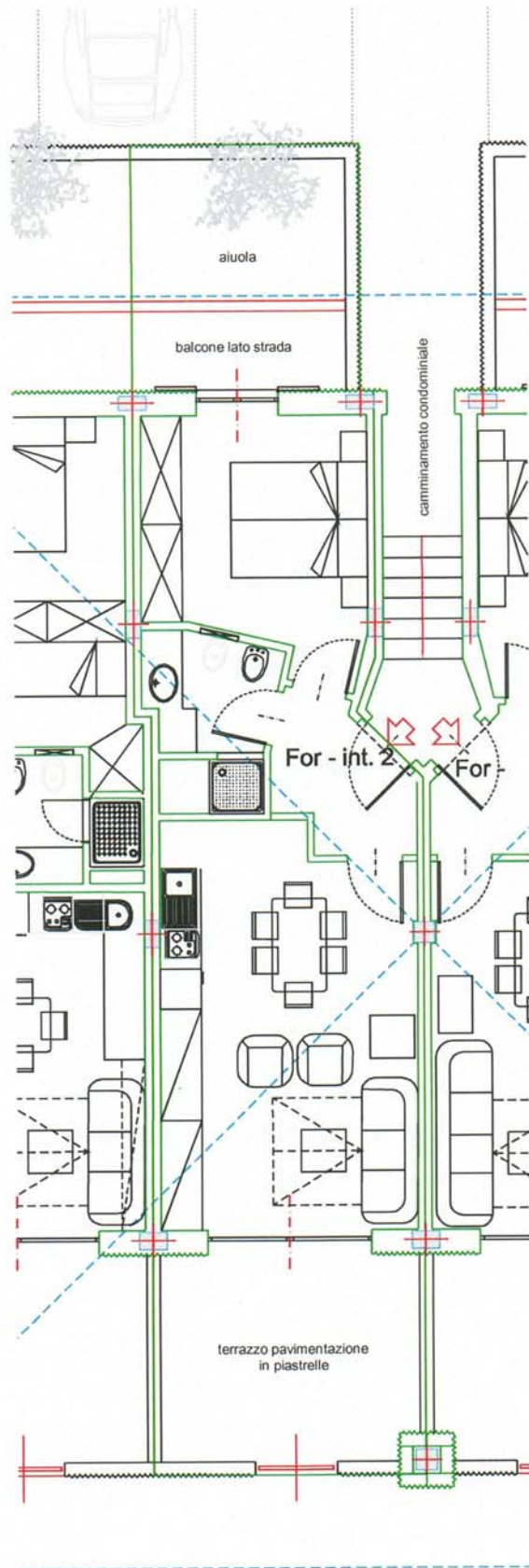
CORPO B7 - piano secondo - int. 3 - scala 1:100 -

BLOCK B7 - second floor - int. 3 - scale 1:100 -

n. appartamento	sup. magazzino - mq -
int. 3	38.82

apartment #	storepom - mq -
int. 3	38.82

APPARTAMENTI FORESTERIE  
FORESTERIA DI PONENTE - int. 2 -



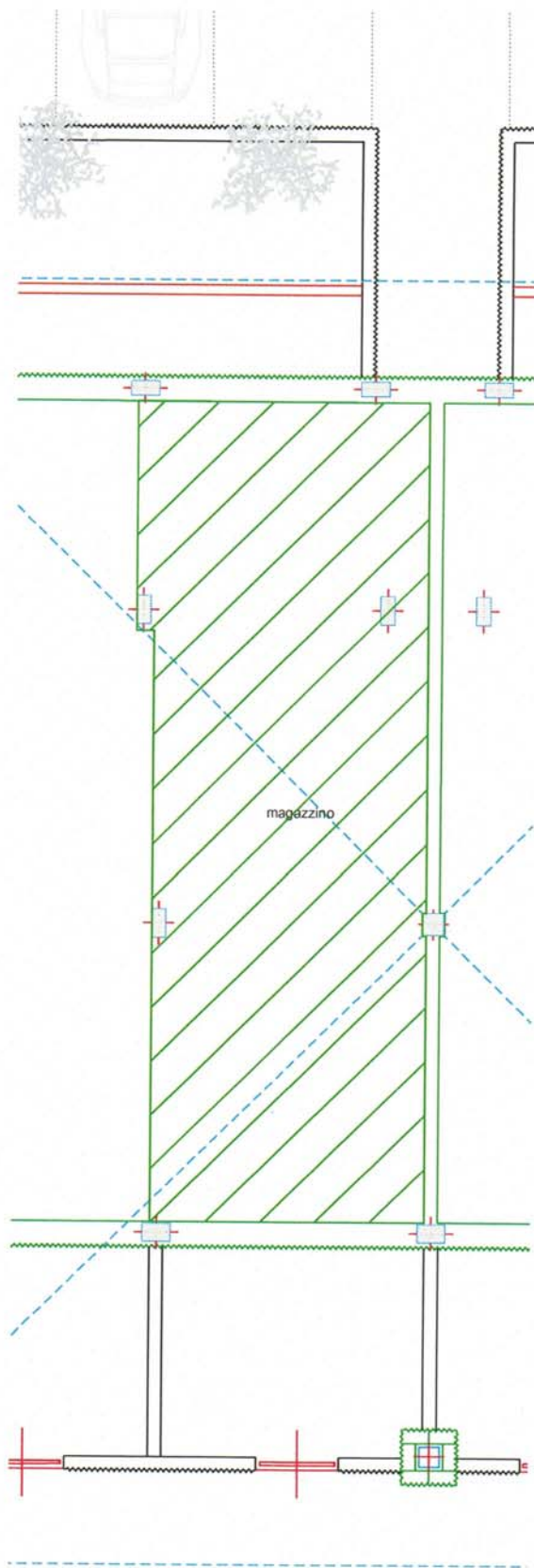
FORESTERIA DI PONENTE - piano primo - int. 2 - scala 1:100 -

FORESTERIA DI PONENTE - first floor - int. 2 - scale 1:100 -

n. appartamento	sup. commerciale - mq -	terrazzo - mq -
int. 2	48.37	25.28

apartment #	inside surface - mq -	outside surface - mq -
int. 2	48.37	25.28

APPARTAMENTI FORESTERIE  
FORESTERIA DI PONENTE - int. 2 -



FORESTERIA DI PONENTE - piano secondo - int. 2 - scala 1:100 -

FORESTERIA DI PONENTE - second floor - int. 2 - scale 1:100 -

n. appartamento	sup. magazzino - mq -
int. 2	48.99

apartment #	storeroom - mq -
int. 2	48.99